

PROJECT CASE STUDY

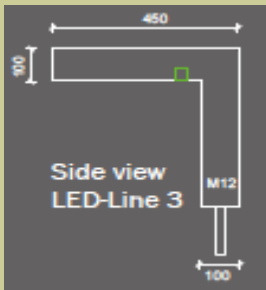
BOMAX

INNOVATIVE STREET SOLUTIONS

Points of Interest

- Existing courtyard area out of date requiring modernization
- Design brief called for the use of energy saving lighting
- Client wanted a modern open looking space, but with plenty of seating options

Product Urbastyle LED-Line 3



Quantity

LED-Line 3 bench - 11 No.
230V Electricity box - 2 No.

Project Team

Client—St Clare's College, Oxford

Architect - Berman Guedes Stretton

Contractor - Benfield & Loxley (Builders) Ltd

Urbastyle Bench LED-Line 3

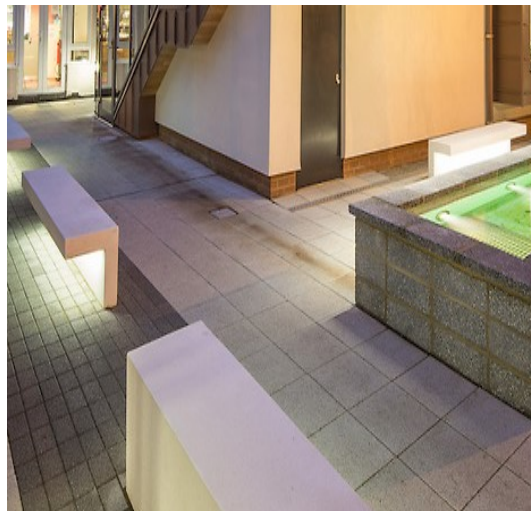
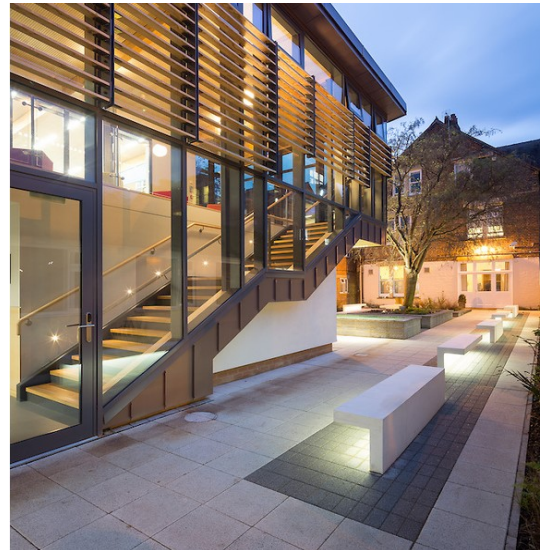
Sept/Oct 2014

St Clare's College - Oxford

Berman Guedes Stretton were appointed to design the new Pamela Morris building for St Clare's College Oxford.

Part of the design brief was to produce a modern looking building, incorporating innovative products. The building had to sit within an existing enclosed footprint, but still give the appearance of an open public space for students to relax in safety.

The existing courtyard was out dated and no longer serving it's purpose, the idea was to rejuvenate the small courtyard space, by incorporating modern furniture and the use of low energy lighting, the open design and use of the narrow Urbastyle LED Line 3 benches with the subtle under lighting has produced an area conducive to relaxation and safety.



Although the existing courtyard covered a relatively small area, the ideas were with the use of modern designs to produce what appears to be an open space, but also incorporating a substantial amount of seating.

By utilising the narrow L-shape bench with the LED under lights, provides adequate seating without appearing to impact on the overall space.

The soft lighting provided by the benches LED strip lights, produce a comfortable seating area, the low energy lighting solution also having a positive impact to the environmental concerns.

The Urbastyle LED Line 3 bench solution was supplied by Bomax as a complete supply package and specification including the 2No. Electrical boxes and cable requirement for the whole installation.

The overall success of the building and courtyard design has had a positive effect on the students, and been very well accepted by the client

Project completed Sept/Oct 2014.

